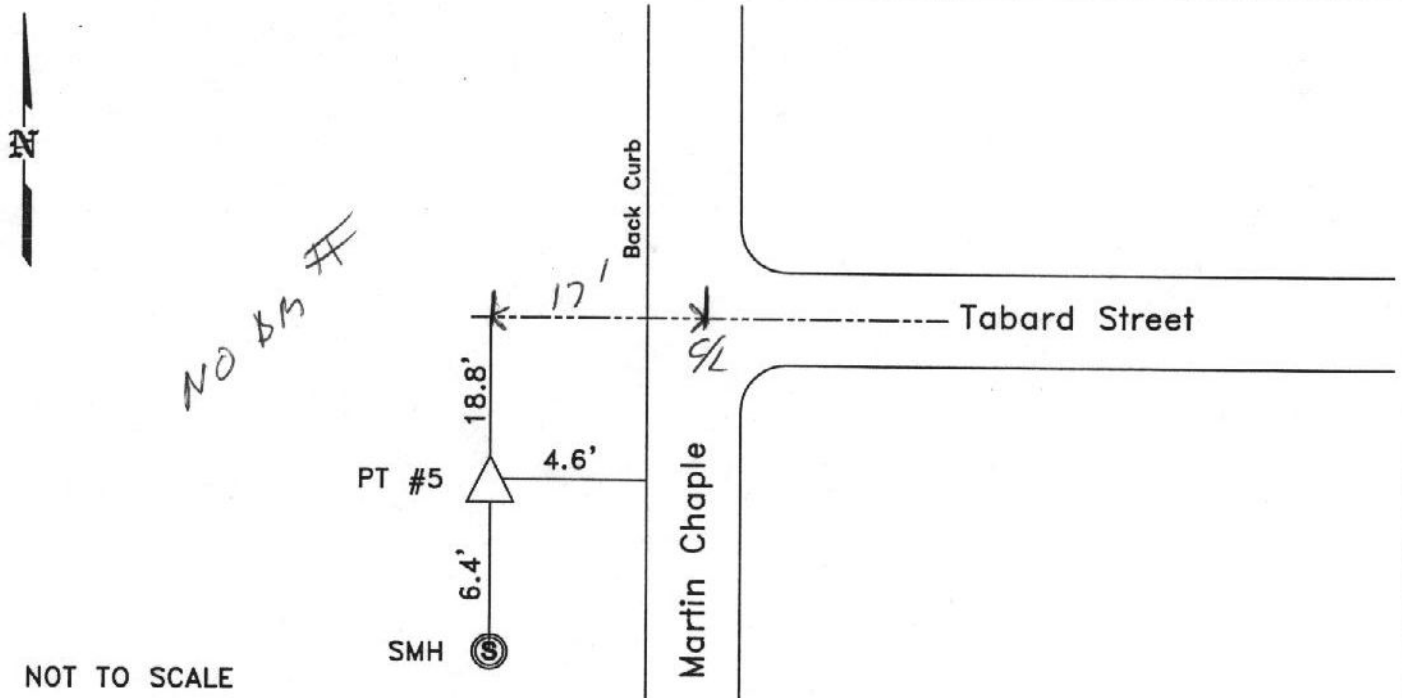


CITY OF MURRAY CONTROL MONUMENT CARD

DESIGNATION: PT #5
TYPE: CONCRETE MONUMENT W/ CITY DISK
DATE SET: JUNE 2002 QUAD: MURRAY, KY.
HORIZONTAL DATUM: NAD-83 VERTICAL DATUM: NAVD-88
STATE: KENTUCKY COUNTY: CALLOWAY ZONE: KY. S 1602

NORTHING: 1742020.60 FT
EASTING: 883269.16 FT
ELEVATION: 511.65 FT (GPS)
LATITUDE: N 36°35'02.44258" LONGITUDE: W 088°19'44.20135"
SCALE: CONVERGENCE:
PLANE AZI. TO AZI. MARK:

To Reach: Located 4.6' west of the west back of curb of Martin Chaple Road, 18.8' south of the projected centerline of Tabard Street and 6.4' north of the centerline of a sewer manhole.



1ST SEQ.

GRW Aerial Surveys, Inc.
801 Corporate Dr. Lexington Ky. 40503
(859)223-3999